

DX-2000QVP

JUKI

QVP
Quilt Virtuoso Pro



DX-2000QVP

Professional Quality Quilting & Sewing Machine

Created for quilters, backed with industrial technology



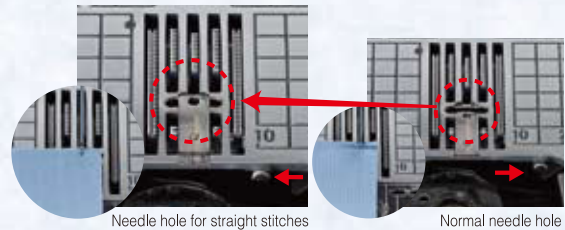
ENJOY ENHANCED SEWING QUALITY WITH THE FUSION OF JUKI INDUSTRIAL SEWING MACHINE KNOWLEDGE AND TECHNOLOGY

BOX FEED - JUKI INDUSTRIAL SEWING MACHINE TECHNOLOGY



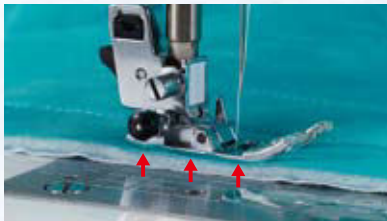
The box feed technology moves your fabric to allow you to create perfect high-quality stitches on all types of fabrics. The box feed system stays in contact with your fabrics longer for a consistent, reliable seam every time. Piece perfectly without worries of shifting or sliding fabrics.

STRAIGHT STITCH SLIDE PLATE



Simply slide the front lever to switch to a single needle hole. Sew the lightest fabrics with perfect needle permeation. The single needle plate will not allow fabrics to be pushed into the needle hole. Free motion stitch with precision and perfection. Sew with confidence, when the single needle hole plate is set, only the straight stitch patterns can be selected.

FLOAT FUNCTION PREVENTS UNEVEN SEAMS



By pressing the float button, you can sew with the presser foot slightly raised. By raising the presser foot to float you can sew fabrics without pushing layers or creating uneven seams. This is effective when quilting and sewing appliques. The height of the presser foot can be set from 0 to 2.5mm in increments of 0.1 mm.

LARGE SEWING SPACE

Enjoy extra space and comfort by adding the accessory table while quilting.



SPEEDY STRAIGHT SEWING

With a maximum straight sewing speed of 1,050 stitches/min, you can sew fast.

AUTOMATIC PRESSER FOOT LIFTING AFTER THREAD TRIMMING / PRESSER FOOT PIVOT FUNCTION

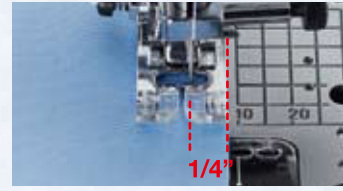


Because the presser foot is automatically lifted after automatic thread trimming, you can quickly remove fabrics.

And when you stop sewing, the needle stops in the down position and presser foot automatically lifts to allow for fabric movement. Sew corners or pivot with ease, when you resume sewing the presser foot automatically and quickly lowers for continuous smooth sewing.

* These functions can also be switched off.

CONVENIENT SEWING FUNCTIONS



Piece your quilts with ease using direct stitch selection No.3. Simply align the fabric edges with the edge of the foot, and sew perfect 1/4" seams.



When free motion (quilt pattern No.01 or 02) is selected, the machine will automatically be set to float mode. While sewing, you can adjust the amount of float with the stitch length dial and smoothly move the quilt.

CUSTOMIZING THE MACHINE FOR PREFERRED OPERATION

In addition to the Easy-to-use Quick Select Buttons, customize your operating preferences by combining both the heel switch of the foot controller (Foot Switch) and the Knee-lifting Lever functions.



Quick Select Button

You can customize your machine to best fit you!



Foot Switch Function



Knee-Lifting Lever

	Quick Select Button	Foot Switch Function*	Knee-lifting Lever
Start/Stop	X	(Pressing foot controller)	—
Reverse stitch	X	X	—
Lock stitch	X	X	—
Needle up/down (Half stitch sewing)	X	X	—
One stitch sewing	—	X	—
Presser-foot lifting	X	X	X
Thread trimming	X	X	—

*Only one function can be assigned at a time.
*Foot switch function can also be switched off.



You can adjust the starting and reverse stitch speed between three steps of fast, normal, and slow.

CHECK THE VIDEO REFERENCE FOR CONVENIENT ASSISTANCE!

With the combination of assured automatic operation and fine manual control, you can enjoy ideal natural operation.

- Foot Switch Function
- Presser Foot Pivot Function
- Hassle-free operation

<https://www.youtube.com/jukihomesewing/videos/watch?v=oF5SRq9Q78k>

*You can access the video of JUKI DX series.



ENJOY A STRESS-FREE SEWING EXPERIENCE WITH SMART OPERATION



A VARIETY OF STITCH PATTERNS



The machine includes 287 stitch patterns and 4 alphabetic/numeric fonts. The decorative patterns can be sewn as one point patterns. Up to 10 often-used patterns such as initials can be saved in the memory.



Decorative stitch patterns include stitches inspired by the tradition of crazy quilting. The DX-2000QVP also contains Exclusive Juki quilt stitches know as Random Stitches.

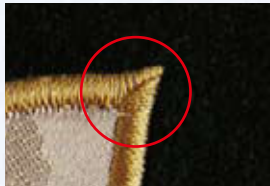


Enjoy even more designs by combining patterns. combine, create and stitch designs such as a beautiful lace braid.

BEAUTIFUL CORNER SEWING OF APPLIQUE



The stitch width of the needle can be set to automatically and gradually change to achieve a stitch that gives a beautiful finish even to the corner of an applique or the start /end of a line of sewing. By adjusting the width and length, you can also control the angles of your design.



ACCESSORIES TO ENHANCE YOUR QUILTING EXPERIENCE



Walking Foot



Patchwork Presser Foot



Open Toe Presser Foot



Quilt Presser Foot



Edge Sewing Presser Foot



Thread Stand

BONUS SPECIALTY ACCESSORIES WITH QVP EDITION



Presser Foot with Guide



Applique Presser Foot



Pearl Attaching Presser Foot



Cording and Embroidery Presser Foot



Cording Presser Foot (for 3 cords)

A WIDE VARIETY OF FEATURES TO INSPIRE CREATIVITY



Enjoy a new level of performance with JUKI's newest quilting & sewing machine. That's the DX-2000QVP.

Innovative functions are realized through the fusion of Industrial and Home Sewing Technology. Experience the machine and stitch quality that only the largest Industrial Sewing Machine Company in the world can offer.

Release yourself from the stress of working towards perfection and enjoy the new Smart Sewing Operation System with customizable operations to fit your sewing needs.

Enhance your quilt-making experience with an exciting variety of stitch patterns and specialty quilt accessories available only for the DX-2000QVP.

We are proud to introduce the DX-2000QVP.



DX-2000QVP

List of main functions/specifications

	Name	Function explanation	DX-2000QVP
Functions	Control system	-	Computer
	Number of stitch patterns	Number of pre-programmed stitch patterns	287
	Number of available fonts	Number of alphabetic/numeric fonts	4
	Buttonhole	Buttonhole sewing system	Automatic (sensor system) with clamping plate
	Cutting width adjustment of the buttonhole	Function to adjust the cutting width of the buttonhole in 3 steps. (L / M / S)	X
	Direct stitch pattern selection	Single-button selection of frequently used stitch patterns	10 patterns
	Start/stop button	Variable start/stop button color to indicate the readiness of the sewing machine	Green: Ready to start and/or while sewing Red: Not ready to start Orange: When the lock stitch button is pressed while the sewing machine is engaged in pattern sewing
	Maximum stitch speed	Maximum number of vertical movements the needle can make per minute	1,050 sti/min
	Auto thread trimming	Automatic simultaneous needle thread and bobbin thread cutting	X
	Automatic needle threader	Automatic needle-threading	Automatic needle threader
	Thread tension system	Needle/bobbin thread tension adjustment system	Automatic
	Automatic lock stitch	Automatic reverse stitch/lock stitch at the start/end of sewing	Automatic lock stitch and thread trimming
	Feed mechanism	Number of feed dogs and fabric feeding system	BOX feed mechanism
	Presser foot pressure adjustment	Adjustable presser foot pressure	Stepless adjustment
	Drop feed	Retractable feed dogs for free motion and button-stitching	X
	Quick bobbin preparation	Start sewing by simply passing the thread through a guide, without needing to pull the bobbin thread	X
	Bobbin thread winder	Bobbin thread winding system	Bobbin winder with independent motor
	Light	Type and number of lights illuminating the work surface of the sewing machine	2 LED lights
	Straight stitch slide plate	Function to switch the needle hole to straight-line stitching	X
	Float function	Function for sewing with slightly floating presser foot	X
	Free arm	Removable auxiliary bed for easy sewing in hard to reach areas such as sleeves, hems and necklines	X
	Change in the length/width of stitches	Adjustable stitch length/width	Dial system
	Number of needle position (straight stitch/other than straight stitch)	Number of needle positions for stitch patterns	37 / 3
	Pattern (right and left) reverse	Right/left reversible patterns	X
	Twin needle sewing	Parallel stitching with 2 mm needle width	X
	Adjustable starting/reverse stitch speed	Adjustable start/reverse/lock stitch speed	X
	Lock stitch	Create invisible lock stitches at the start/end of sewing.	X
	Low-speed inching sewing	Long-press the needle up/down button for extremely low-speed stitching	X
	Presser foot pivot function	Function to automatically raise the presser foot when the needle is stopped in the lower position when stopping sewing	X
	Memory function	Memory capacity for character/pattern combinations and setting values	10 patterns
Presser foot horizontality holder button	Press the black button on the standard presser foot to hold it in a horizontal position at the start of sewing thick fabrics	X	
Height of lifting of presser foot (1 step/2 steps)	Presser foot lifting range	Button system: 6 mm Lever system: 6 mm / 12 mm	
Standard Accessories	Hard case	Case to protect the sewing machine from damage and dust	Hard case with accessory storage part
	Knee lifting lever	Knee-operated lever for hands-free raising and lowering of presser foot	X
	Wide table	Table to expand the work space of the sewing machine	X
	Foot controller	Foot-controlled start, stop, and stitch speed	Included; with foot switch function
	Accessories	-	Standard presser foot (A)/Zipper presser foot (B)/ Overcasting presser foot (C)/Blind stitch presser foot (D)/ Buttonhole presser foot (E)/ Manual buttonhole presser foot (I)/ Walking foot (N)/Open toe presser foot (O)/ Patchwork presser foot (P)/Quilt presser foot (Q)/ Edge sewing presser foot (R)/Smooth presser foot (T)/ Bobbin (4)/Needle set HA X 1 #11(1) :#14(1) :#16(1) :for knit #11(1)/Twin needle/Quilt guide/Auxiliary spool pin/ T-shape screwdriver/Ripper/Cleaning brush/ Spool cap (large)/Spool cap (Middle)/ Spool cap (Small)/Eyelet punch/Thread stand/Wide table/ Foot controller/Knee-lifting lever/ Power cord/Hard case/Instruction manual/ Operation support DVD *inside the QVP special accessories box: Presser foot with guide/Cording presser foot (for 3 cords)/ Cording and embroidery presser foot / Applique presser foot /Pearl attaching presser foot
Specifications	Dimensions (mm)	Width X Height X Depth of the sewing machine	445(W)x291(H)x210(D)
	Dimensions with hard case (mm)	Width X Height X Depth of the sewing machine when the hard case is fitted	510(W)x305(H)x257(D)
	Arm size	Width X Height of the work space to the right of the needle	8.0"x4.4" (203x112mm)
	Weight	Weight of the sewing machine only	10.3kg/21.6lbs

Optional Accessories



Stitch Area Magnifier

Creates 1.4 times magnification to the stitch area.

Part No. 40164074



Quilt Presser Foot (Open Type)

For free motion quilting. Open quilting foot for better visibility.

Part No. 40080949



Quilt Presser Foot (Transparent Type)

For free motion quilting in either a straight or zigzag stitch.

Part No. 40080953

JUKI QVP Series
Enjoy Exceptional Sewing and Quilting Performance
Feel at Home with Traditional Juki Quality!

JUKI

JUKI CORPORATION

2-11-1, TSURUMAKI, TAMA-SHI, TOKYO
206-8551, JAPAN
<http://www.juki.co.jp>

JUKI ECO PRODUCTS

This is an eco-friendly product which complies JUKI ECO PRODUCTS standards for protecting the environment.



●The sewing machine complies with the "JUKI Group Green Procurement Guidelines" on the use of hazardous substances, which is stricter than other restrictions, such as those of the RoHS Directive.

For details of JUKI PRODUCTS, refer to:
http://www.juki.co.jp/eco_e/index.html

*The RoHS Directive is an EU Directive limiting the use of 6 hazardous substances (lead, hexavalent chromium, mercury, cadmium, PBB and PBDE) in electrical and electronic equipment. The Juki Green Procurement Guideline is the voluntarily established criteria to eliminate not only the aforementioned six substances, but also other ones which also adversely affect the environment.

echidna SEWING

1800 000 360 | echidnasewing.com.au