

Design: Large Outline Mermaids - 001.EMB

Height: 143.2 mm
 Width: 104.2 mm
 Stitches: 7,260
 Colors: 7
 Color changes: 6
 Trims: 12
 Machine format: Janome
 Hoop: Medium (130 x 180)
 Fabric type: Pure Cotton
 Required stabilizer: Topping:
 Backing: Tear Away x 2
 Total bobbin: 15.11m

Color Sequence:

#	Color	Element	Code	Name	Chart
1.	4		H-174-1044	Canary Yellow	Hemingworth
2.	7		H-220-1013	Very Berry	Hemingworth
3.	3		H-006-1275	Neon Yellow	Hemingworth
4.	1		H-023-1087	Charcoal	Hemingworth
5.	6		H-070-1172	Icicle Blue	Hemingworth
6.	5		H-063-1196	Dark Aquamarine	Hemingworth
7.	2		H-067-1260	Caribbean Blue	Hemingworth



Design: Large Outline Mermaids - 002.EMB

Height: 142.9 mm
 Width: 85.4 mm
 Stitches: 8,138
 Colors: 6
 Color changes: 6
 Trims: 17
 Machine format: Janome
 Hoop: Medium (130 x 180)
 Fabric type: Custom Fabric
 Required stabilizer: Topping:
 Backing: Tear Away x 2
 Total bobbin: 14.05m

Color Sequence:

#	Color	Element	Code	Name	Chart
1.	2		H-220-1013	Very Berry	Hemingworth
2.	1		H-023-1087	Charcoal	Hemingworth
3.	3		H-174-1044	Canary Yellow	Hemingworth
4.	4		H-077-1177	Mint Green	Hemingworth
5.	6		H-001-1001	Pure White	Hemingworth
6.	5		H-269-1214	Lavender	Hemingworth
7.	2		H-220-1013	Very Berry	Hemingworth



Design: Large Outline Mermaids - 003.EMB

Height: 119.3 mm
 Width: 113.0 mm
 Stitches: 8,252
 Colors: 4
 Color changes: 3
 Trims: 18
 Machine format: Janome
 Hoop: Medium (130 x 180)
 Fabric type: Custom Fabric
 Required stabilizer: Topping:
 Backing: Tear Away x 2
 Total bobbin: 19.91m

Color Sequence:

#	Color	Element	Code	Name	Chart
1.	4		H-070-1172	Icicle Blue	Hemingworth
2.	2		H-077-1177	Mint Green	Hemingworth
3.	3		H-269-1214	Lavender	Hemingworth
4.	1		H-220-1013	Very Berry	Hemingworth



Design: Large Outline Mermaids - 004.EMB

Height: 93.2 mm
 Width: 127.6 mm
 Stitches: 5,819
 Colors: 4
 Color changes: 3
 Trims: 14
 Machine format: Janome
 Hoop: Medium (130 x 180)
 Fabric type: Custom Fabric
 Required stabilizer: Topping:
 Backing: Tear Away x 2
 Total bobbin: 14.35m

Color Sequence:

#	Color	Element	Code Name	Chart
1.	1		H-070-1172 Icicle Blue	Hemingworth
2.	2		H-218-1012 Bubblegum Pink	Hemingworth
3.	3		H-220-1013 Very Berry	Hemingworth
4.	4		H-024-1000 Classic Black	Hemingworth



Design: Large Outline Mermaids - 005.EMB

Height: 120.3 mm
 Width: 127.5 mm
 Stitches: 8,513
 Colors: 4
 Color changes: 3
 Trims: 13
 Machine format: Janome
 Hoop: Medium (130 x 180)
 Fabric type: Custom Fabric
 Required stabilizer: Topping:
 Backing: Tear Away x 2
 Total bobbin: 22.71m

Color Sequence:

#	Color	Element	Code	Name	Chart
1.	10		1172	Icicle Blue	Hemingworth PolySelect
2.	7		1177	Mint Green	Hemingworth PolySelect
3.	8		1013	Very Berry	Hemingworth PolySelect
4.	9		1275	Neon Yellow	Hemingworth PolySelect



Design: Large Outline Mermaids - 006.EMB

Height: 143.0 mm
 Width: 65.2 mm
 Stitches: 7,427
 Colors: 6
 Color changes: 5
 Trims: 18
 Machine format: Janome
 Hoop: Medium (130 x 180)
 Fabric type: Custom Fabric
 Required stabilizer: Topping:
 Backing: Tear Away x 2
 Total bobbin: 11.53m

Color Sequence:

#	Color	Element	Code	Name	Chart
1.	2		H-070-1172	Icicle Blue	Hemingworth
2.	1		H-067-1260	Caribbean Blue	Hemingworth
3.	4		H-174-1044	Canary Yellow	Hemingworth
4.	6		H-269-1214	Lavender	Hemingworth
5.	3		H-024-1000	Classic Black	Hemingworth
6.	5		H-220-1013	Very Berry	Hemingworth



Design: Large Outline Mermaids - 007.EMB

Height: 164.3 mm
 Width: 119.6 mm
 Stitches: 9,665
 Colors: 6
 Color changes: 5
 Trims: 17
 Machine format: Janome
 Hoop: Medium (130 x 180)
 Fabric type: Custom Fabric
 Required stabilizer: Topping:
 Backing: Tear Away x 2
 Total bobbin: 22.87m

Color Sequence:

#	Color	Element	Code	Name	Chart
1.	5		H-174-1044	Canary Yellow	Hemingworth
2.	1		H-024-1000	Classic Black	Hemingworth
3.	2		H-220-1013	Very Berry	Hemingworth
4.	4		H-006-1275	Neon Yellow	Hemingworth
5.	6		H-077-1177	Mint Green	Hemingworth
6.	3		H-269-1214	Lavender	Hemingworth



Design: Large Outline Mermaids - 008.EMB

Height: 138.9 mm
Width: 122.6 mm
Stitches: 8,179
Colors: 2
Color changes: 1
Trims: 13
Machine format: Janome
Hoop: Medium (130 x 180)
Fabric type: Custom Fabric
Required stabilizer: Topping:
Backing: Tear Away x 2
Total bobbin: 22.12m

Color Sequence:

#	Color	Element	Code	Name	Chart
1.	1		H-070-1172	Icicle Blue	Hemingworth
2.	2		H-063-1196	Dark Aquamarine	Hemingworth

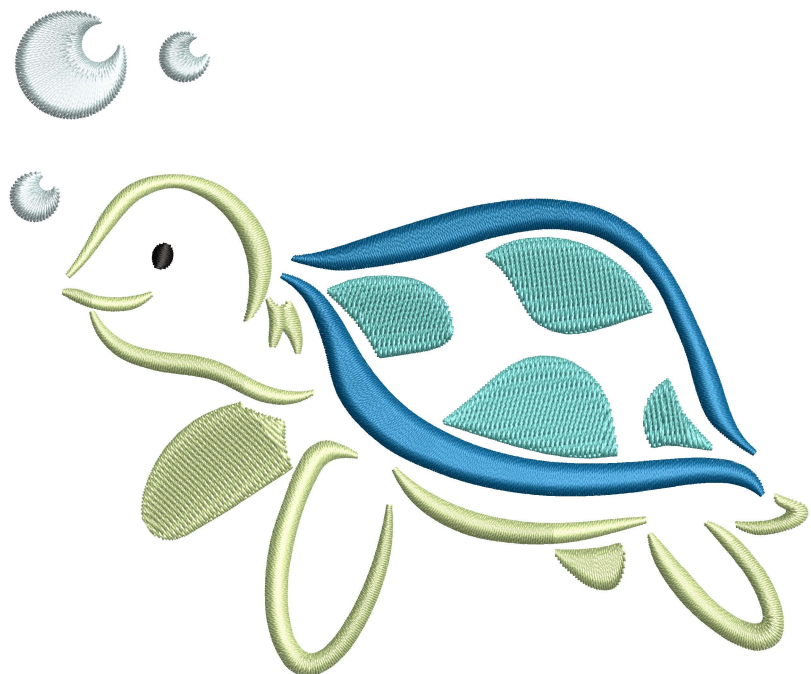


Design: Large Outline Mermaids - 009.EMB

Height: 104.5 mm
 Width: 125.0 mm
 Stitches: 7,462
 Colors: 5
 Color changes: 4
 Trims: 14
 Machine format: Janome
 Hoop: Medium (130 x 180)
 Fabric type: Custom Fabric
 Required stabilizer: Topping:
 Backing: Tear Away x 2
 Total bobbin: 17.61m

Color Sequence:

#	Color	Element	Code	Name	Chart
1.	3		H-070-1172	Icicle Blue	Hemingworth
2.	1		H-077-1177	Mint Green	Hemingworth
3.	5		H-063-1196	Dark Aquamarine	Hemingworth
4.	2		H-109-1096	Pistachio Nut	Hemingworth
5.	4		H-024-1000	Classic Black	Hemingworth



Design: Large Outline Mermaids - 010.EMB

Height: 128.2 mm
 Width: 137.5 mm
 Stitches: 9,857
 Colors: 6
 Color changes: 5
 Trims: 17
 Machine format: Janome
 Hoop: Medium (130 x 180)
 Fabric type: Custom Fabric
 Required stabilizer: Topping:
 Backing: Tear Away x 2
 Total bobbin: 24.05m

Color Sequence:

#	Color	Element	Code	Name	Chart
1.	6		H-006-1275	Neon Yellow	Hemingworth
2.	5		H-077-1177	Mint Green	Hemingworth
3.	3		H-024-1000	Classic Black	Hemingworth
4.	4		H-220-1013	Very Berry	Hemingworth
5.	1		H-269-1214	Lavender	Hemingworth
6.	2		H-174-1044	Canary Yellow	Hemingworth



Design: Large Outline Mermaids - 011.EMB

Height: 128.7 mm
 Width: 90.4 mm
 Stitches: 5,749
 Colors: 3
 Color changes: 2
 Trims: 14
 Machine format: Janome
 Hoop: Medium (130 x 180)
 Fabric type: Custom Fabric
 Required stabilizer: Topping:
 Backing: Tear Away x 2
 Total bobbin: 9.52m

Color Sequence:

#	Color	Element	Code	Name	Chart
1.	1		H-070-1172	Icicle Blue	Hemingworth
2.	2		H-006-1275	Neon Yellow	Hemingworth
3.	3		H-193-1024	Citrus Burst	Hemingworth

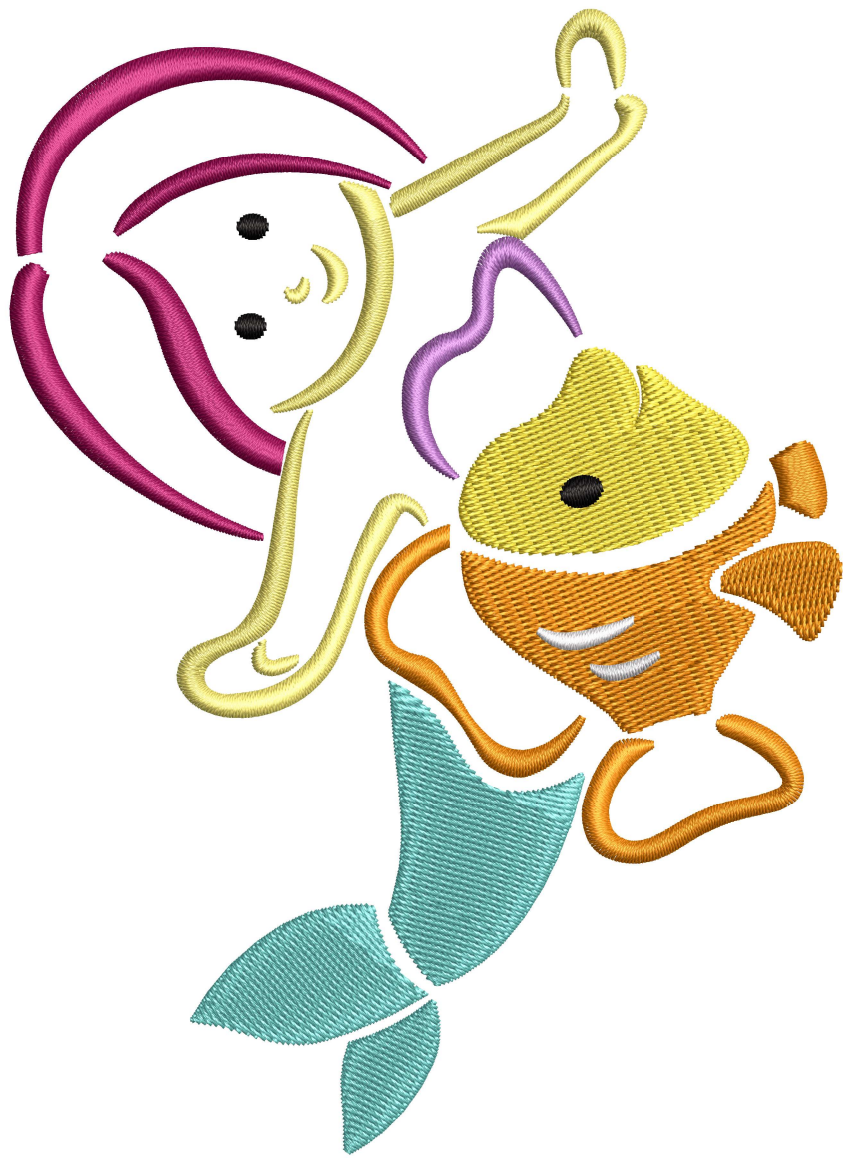


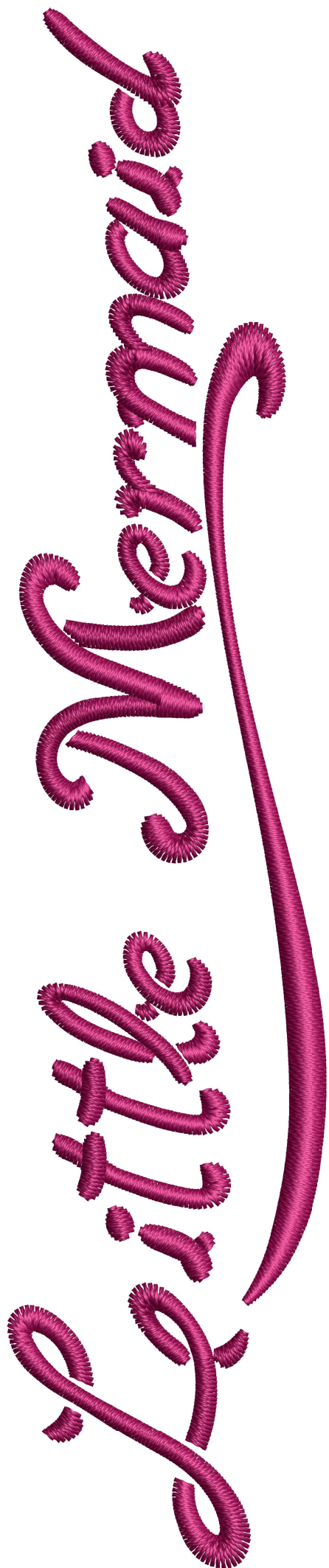
Design: Large Outline Mermaids - 012.EMB

Height: 142.8 mm
 Width: 103.4 mm
 Stitches: 9,031
 Colors: 8
 Color changes: 7
 Trims: 17
 Machine format: Janome
 Hoop: Medium (130 x 180)
 Fabric type: Custom Fabric
 Required stabilizer: Topping:
 Backing: Tear Away x 2
 Total bobbin: 20.17m

Color Sequence:

#	Color	Element	Code	Name	Chart
1.	3		H-077-1177	Mint Green	Hemingworth
2.	1		H-193-1024	Citrus Burst	Hemingworth
3.	6		H-006-1275	Neon Yellow	Hemingworth
4.	2		H-026-1119	Ice Blue	Hemingworth
5.	7		H-269-1214	Lavender	Hemingworth
6.	5		H-174-1044	Canary Yellow	Hemingworth
7.	4		H-220-1013	Very Berry	Hemingworth
8.	8		H-024-1000	Classic Black	Hemingworth





Design: Large Outline Mermaids - 013.EMB

Height: 143.0 mm
 Width: 29.2 mm
 Stitches: 3,823
 Colors: 1
 Color changes: 0
 Trims: 5
 Machine format: Janome
 Hoop: Medium (130 x 180)
 Fabric type: Custom Fabric
 Required stabilizer: Topping:
 Backing: Tear Away x 2
 Total bobbin: 5.71m

Color Sequence:

#	Color	Element	Code Name	Chart
1.	1		H-220-1013 Very Berry	Hemingworth

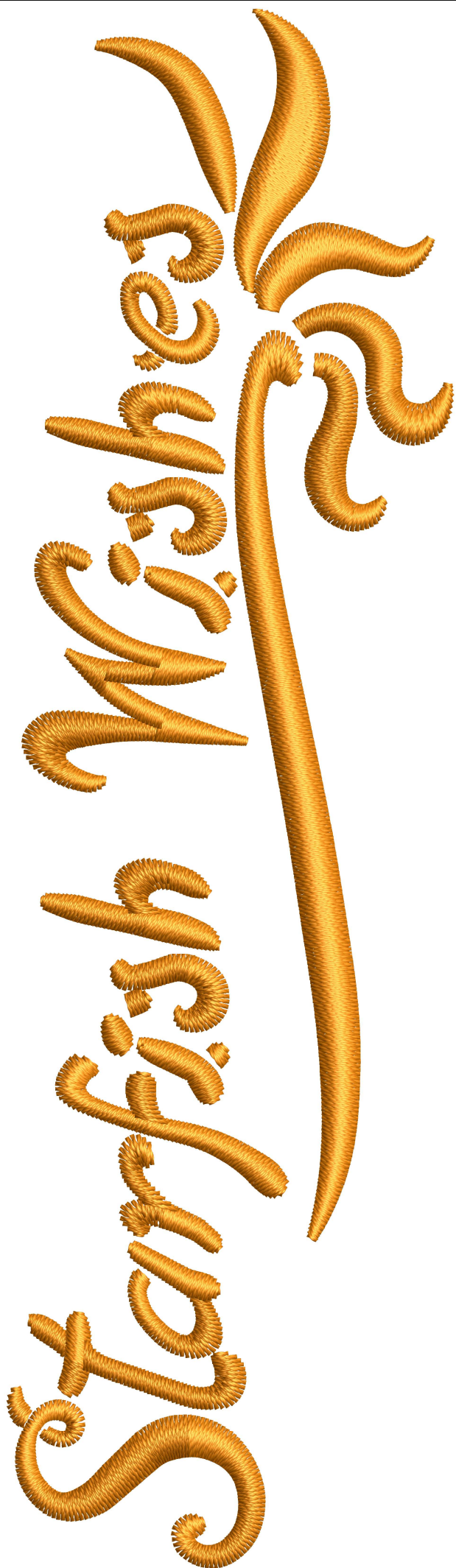
Design: Large Outline Mermaids - 014.EMB

Height: 143.1 mm
 Width: 88.9 mm
 Stitches: 5,708
 Colors: 2
 Color changes: 1
 Trims: 9
 Machine format: Janome
 Hoop: Medium (130 x 180)
 Fabric type: Custom Fabric
 Required stabilizer: Topping:
 Backing: Tear Away x 2
 Total bobbin: 12.59m

Color Sequence:

#	Color	Element	Code	Name	Chart
1.	1		H-269-1214	Lavender	Hemingworth
2.	2		H-220-1013	Very Berry	Hemingworth





Design: Large Outline Mermaids - 015.EMB

Height: 142.8 mm
 Width: 40.8 mm
 Stitches: 4,200
 Colors: 1
 Color changes: 0
 Trims: 3
 Machine format: Janome
 Hoop: Medium (130 x 180)
 Fabric type: Custom Fabric
 Required stabilizer: Topping:
 Backing: Tear Away x 2
 Total bobbin: 7.92m

Color Sequence:

#	Color	Element	Code Name	Chart
1.	1		H-193-1024 Citrus Burst	Hemingworth

Design: Large Outline Mermaids -
016.EMB

Height: 59.4 mm
Width: 117.8 mm
Stitches: 4,234
Colors: 1
Color changes: 0
Trims: 6
Machine format: Janome
Hoop: Medium (130 x 180)
Fabric type: Custom Fabric
Required stabilizer: Topping:
Backing: Tear Away x 2
Total bobbin: 10.52m

Color Sequence:

#	Color	Element	Code Name	Chart
1.	1		H-070-1172 Icicle Blue	Hemingworth

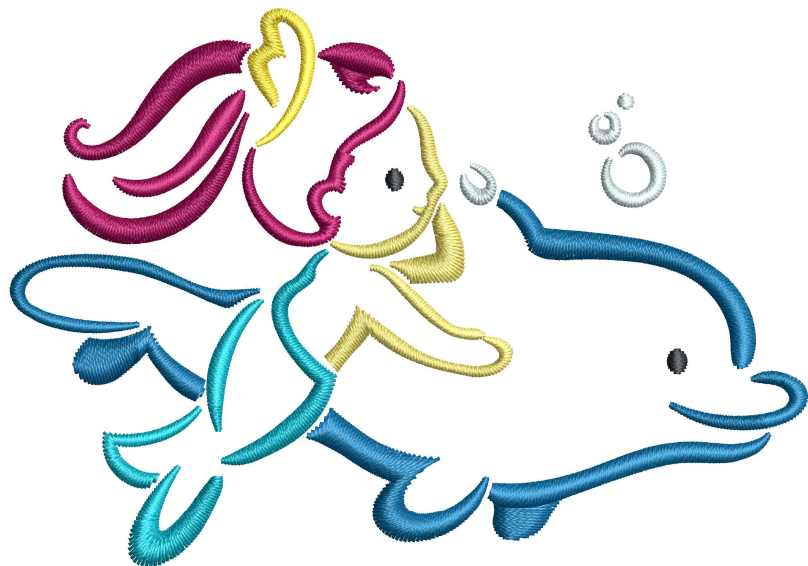
Bubbly!

Design: Small Outline Mermaids - 001.EMB

Height: 66.9 mm
 Width: 95.4 mm
 Stitches: 4,586
 Colors: 7
 Color changes: 6
 Trims: 12
 Machine format: Janome
 Hoop: Medium (130 x 180)
 Fabric type: Pure Cotton
 Required stabilizer: Topping:
 Backing: Tear Away x 2
 Total bobbin: 7.16m

Color Sequence:

#	Color	Element	Code	Name	Chart
1.	4		H-174-1044	Canary Yellow	Hemingworth
2.	7		H-220-1013	Very Berry	Hemingworth
3.	3		H-006-1275	Neon Yellow	Hemingworth
4.	1		H-023-1087	Charcoal	Hemingworth
5.	6		H-070-1172	Icicle Blue	Hemingworth
6.	5		H-063-1196	Dark Aquamarine	Hemingworth
7.	2		H-067-1260	Caribbean Blue	Hemingworth



Design: Small Outline Mermaids - 002.EMB

Height: 57.2 mm
 Width: 95.5 mm
 Stitches: 5,279
 Colors: 6
 Color changes: 6
 Trims: 17
 Machine format: Janome
 Hoop: Medium (130 x 180)
 Fabric type: Custom Fabric
 Required stabilizer: Topping:
 Backing: Tear Away x 2
 Total bobbin: 7.19m

Color Sequence:

#	Color	Element	Code	Name	Chart
1.	2		H-220-1013	Very Berry	Hemingworth
2.	1		H-023-1087	Charcoal	Hemingworth
3.	3		H-174-1044	Canary Yellow	Hemingworth
4.	4		H-077-1177	Mint Green	Hemingworth
5.	6		H-001-1001	Pure White	Hemingworth
6.	5		H-269-1214	Lavender	Hemingworth
7.	2		H-220-1013	Very Berry	Hemingworth



Design: Small Outline Mermaids - 003.EMB

Height: 79.7 mm
 Width: 75.5 mm
 Stitches: 4,595
 Colors: 4
 Color changes: 3
 Trims: 18
 Machine format: Janome
 Hoop: Medium (130 x 180)
 Fabric type: Custom Fabric
 Required stabilizer: Topping:
 Backing: Tear Away x 2
 Total bobbin: 9.30m

Color Sequence:

#	Color	Element	Code	Name	Chart
1.	4		H-070-1172	Icicle Blue	Hemingworth
2.	2		H-077-1177	Mint Green	Hemingworth
3.	3		H-269-1214	Lavender	Hemingworth
4.	1		H-220-1013	Very Berry	Hemingworth



Design: Small Outline Mermaids - 004.EMB

Height: 62.3 mm
 Width: 85.3 mm
 Stitches: 3,643
 Colors: 4
 Color changes: 3
 Trims: 14
 Machine format: Janome
 Hoop: Medium (130 x 180)
 Fabric type: Custom Fabric
 Required stabilizer: Topping:
 Backing: Tear Away x 2
 Total bobbin: 6.79m

Color Sequence:

#	Color	Element	Code Name	Chart
1.	1		H-070-1172 Icicle Blue	Hemingworth
2.	2		H-218-1012 Bubblegum Pink	Hemingworth
3.	3		H-220-1013 Very Berry	Hemingworth
4.	4		H-024-1000 Classic Black	Hemingworth



Design: Small Outline Mermaids - 005.EMB

Height: 80.4 mm
 Width: 85.1 mm
 Stitches: 4,774
 Colors: 4
 Color changes: 3
 Trims: 13
 Machine format: Janome
 Hoop: Medium (130 x 180)
 Fabric type: Custom Fabric
 Required stabilizer: Topping:
 Backing: Tear Away x 2
 Total bobbin: 10.65m

Color Sequence:

#	Color	Element	Code	Name	Chart
1.	10		1172	Icicle Blue	Hemingworth PolySelect
2.	7		1177	Mint Green	Hemingworth PolySelect
3.	8		1013	Very Berry	Hemingworth PolySelect
4.	9		1275	Neon Yellow	Hemingworth PolySelect



Design: Small Outline Mermaids - 006.EMB

Height: 43.8 mm
 Width: 95.5 mm
 Stitches: 5,052
 Colors: 6
 Color changes: 5
 Trims: 18
 Machine format: Janome
 Hoop: Medium (130 x 180)
 Fabric type: Custom Fabric
 Required stabilizer: Topping:
 Backing: Tear Away x 2
 Total bobbin: 6.12m

Color Sequence:

#	Color	Element	Code	Name	Chart
1.	2		H-070-1172	Icicle Blue	Hemingworth
2.	1		H-067-1260	Caribbean Blue	Hemingworth
3.	4		H-174-1044	Canary Yellow	Hemingworth
4.	6		H-269-1214	Lavender	Hemingworth
5.	3		H-024-1000	Classic Black	Hemingworth
6.	5		H-220-1013	Very Berry	Hemingworth



Design: Small Outline Mermaids - 007.EMB

Height: 97.2 mm
 Width: 95.6 mm
 Stitches: 6,414
 Colors: 6
 Color changes: 5
 Trims: 17
 Machine format: Janome
 Hoop: Medium (130 x 180)
 Fabric type: Custom Fabric
 Required stabilizer: Topping:
 Backing: Tear Away x 2
 Total bobbin: 11.58m

Color Sequence:

#	Color	Element	Code	Name	Chart
1.	5		H-174-1044	Canary Yellow	Hemingworth
2.	1		H-024-1000	Classic Black	Hemingworth
3.	2		H-220-1013	Very Berry	Hemingworth
4.	4		H-006-1275	Neon Yellow	Hemingworth
5.	6		H-077-1177	Mint Green	Hemingworth
6.	3		H-269-1214	Lavender	Hemingworth



Design: Small Outline Mermaids - 008.EMB

Height: 81.9 mm
 Width: 92.8 mm
 Stitches: 5,181
 Colors: 2
 Color changes: 1
 Trims: 13
 Machine format: Janome
 Hoop: Medium (130 x 180)
 Fabric type: Custom Fabric
 Required stabilizer: Topping:
 Backing: Tear Away x 2
 Total bobbin: 10.62m

Color Sequence:

#	Color	Element	Code	Name	Chart
1.	1		H-070-1172	Icicle Blue	Hemingworth
2.	2		H-063-1196	Dark Aquamarine	Hemingworth

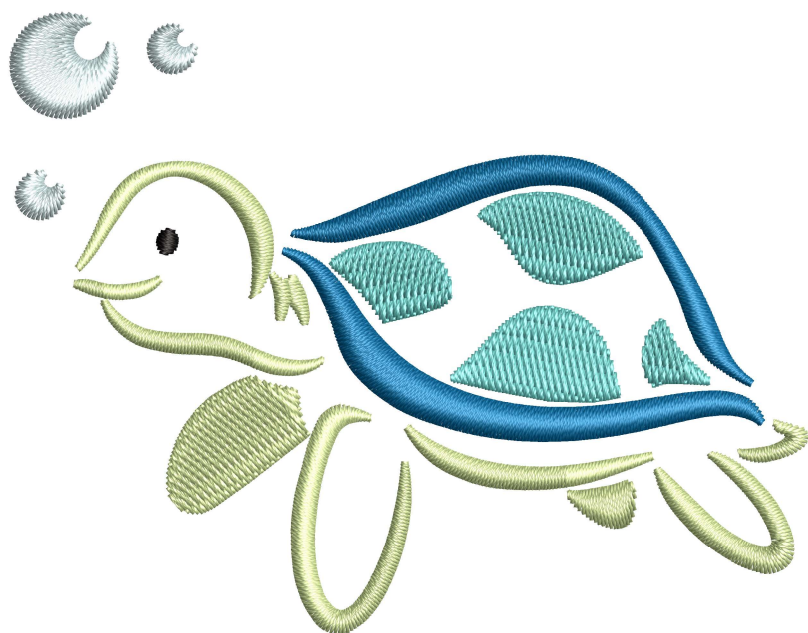


Design: Small Outline Mermaids - 009.EMB

Height: 67.5 mm
 Width: 86.6 mm
 Stitches: 4,459
 Colors: 5
 Color changes: 4
 Trims: 14
 Machine format: Janome
 Hoop: Medium (130 x 180)
 Fabric type: Custom Fabric
 Required stabilizer: Topping:
 Backing: Tear Away x 2
 Total bobbin: 8.42m

Color Sequence:

#	Color	Element	Code	Name	Chart
1.	3		H-070-1172	Icicle Blue	Hemingworth
2.	1		H-077-1177	Mint Green	Hemingworth
3.	5		H-063-1196	Dark Aquamarine	Hemingworth
4.	2		H-109-1096	Pistachio Nut	Hemingworth
5.	4		H-024-1000	Classic Black	Hemingworth



Design: Small Outline Mermaids - 010.EMB

Height: 89.1 mm
 Width: 95.6 mm
 Stitches: 6,313
 Colors: 6
 Color changes: 5
 Trims: 17
 Machine format: Janome
 Hoop: Medium (130 x 180)
 Fabric type: Custom Fabric
 Required stabilizer: Topping:
 Backing: Tear Away x 2
 Total bobbin: 12.40m

Color Sequence:

#	Color	Element	Code	Name	Chart
1.	6		H-006-1275	Neon Yellow	Hemingworth
2.	5		H-077-1177	Mint Green	Hemingworth
3.	3		H-024-1000	Classic Black	Hemingworth
4.	4		H-220-1013	Very Berry	Hemingworth
5.	1		H-269-1214	Lavender	Hemingworth
6.	2		H-174-1044	Canary Yellow	Hemingworth



Design: Small Outline Mermaids - 011.EMB

Height: 67.0 mm
 Width: 95.3 mm
 Stitches: 4,537
 Colors: 3
 Color changes: 2
 Trims: 14
 Machine format: Janome
 Hoop: Medium (130 x 180)
 Fabric type: Custom Fabric
 Required stabilizer: Topping:
 Backing: Tear Away x 2
 Total bobbin: 6.06m

Color Sequence:

#	Color	Element	Code	Name	Chart
1.	1		H-070-1172	Icicle Blue	Hemingworth
2.	2		H-006-1275	Neon Yellow	Hemingworth
3.	3		H-193-1024	Citrus Burst	Hemingworth

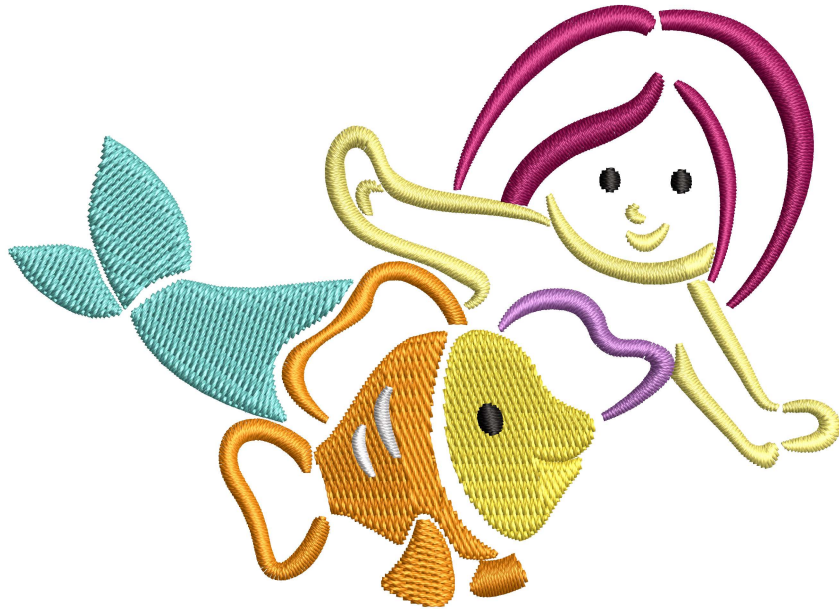


Design: Small Outline Mermaids - 012.EMB

Height: 68.9 mm
 Width: 95.3 mm
 Stitches: 5,528
 Colors: 8
 Color changes: 7
 Trims: 17
 Machine format: Janome
 Hoop: Medium (130 x 180)
 Fabric type: Custom Fabric
 Required stabilizer: Topping:
 Backing: Tear Away x 2
 Total bobbin: 9.96m

Color Sequence:

#	Color	Element	Code	Name	Chart
1.	3		H-077-1177	Mint Green	Hemingworth
2.	1		H-193-1024	Citrus Burst	Hemingworth
3.	6		H-006-1275	Neon Yellow	Hemingworth
4.	2		H-026-1119	Ice Blue	Hemingworth
5.	7		H-269-1214	Lavender	Hemingworth
6.	5		H-174-1044	Canary Yellow	Hemingworth
7.	4		H-220-1013	Very Berry	Hemingworth
8.	8		H-024-1000	Classic Black	Hemingworth



Design: Small Outline Mermaids - 013.EMB

Height: 19.7 mm
Width: 95.5 mm
Stitches: 2,602
Colors: 1
Color changes: 0
Trims: 5
Machine format: Janome
Hoop: Medium (130 x 180)
Fabric type: Custom Fabric
Required stabilizer: Topping:
Backing: Tear Away x 2
Total bobbin: 3.04m

Color Sequence:

#	Color	Element	Code Name	Chart
1.	1		H-220-1013 Very Berry	Hemingworth



Design: Small Outline Mermaids -
014.EMB

Height: 59.5 mm
Width: 95.6 mm
Stitches: 4,101
Colors: 2
Color changes: 1
Trims: 9
Machine format: Janome
Hoop: Medium (130 x 180)
Fabric type: Custom Fabric
Required stabilizer: Topping:
Backing: Tear Away x 2
Total bobbin: 6.59m

Color Sequence:

#	Color	Element	Code	Name	Chart
1.	1		H-269-1214	Lavender	Hemingworth
2.	2		H-220-1013	Very Berry	Hemingworth



Mermaid
Kisses

Design: Small Outline Mermaids - 015.EMB

Height: 27.4 mm
 Width: 95.3 mm
 Stitches: 3,022
 Colors: 1
 Color changes: 0
 Trims: 3
 Machine format: Janome
 Hoop: Medium (130 x 180)
 Fabric type: Custom Fabric
 Required stabilizer: Topping:
 Backing: Tear Away x 2
 Total bobbin: 4.23m

Color Sequence:

#	Color	Element	Code Name	Chart
1.	1		H-193-1024 Citrus Burst	Hemingworth



Design: Small Outline Mermaids - 016.EMB

Height: 34.7 mm
 Width: 68.6 mm
 Stitches: 2,463
 Colors: 1
 Color changes: 0
 Trims: 6
 Machine format: Janome
 Hoop: Medium (130 x 180)
 Fabric type: Custom Fabric
 Required stabilizer: Topping:
 Backing: Tear Away x 2
 Total bobbin: 3.95m

Color Sequence:

#	Color	Element	Code Name	Chart
1.	1		H-070-1172 Icicle Blue	Hemingworth

