

Design:SLB-Crab.EMB

Height: 120.8 mm
 Width: 119.9 mm
 Stitches: 29,281
 Colors: 9
 Color changes: 9
 Trims: 65
 Machine format: Janome
 Hoop: Medium (130 x 180)
 Fabric type: Custom Fabric
 Required stabilizer: Topping:
 Backing: Tear Away x 2
 Total bobbin: 49.22m

Color Sequence:

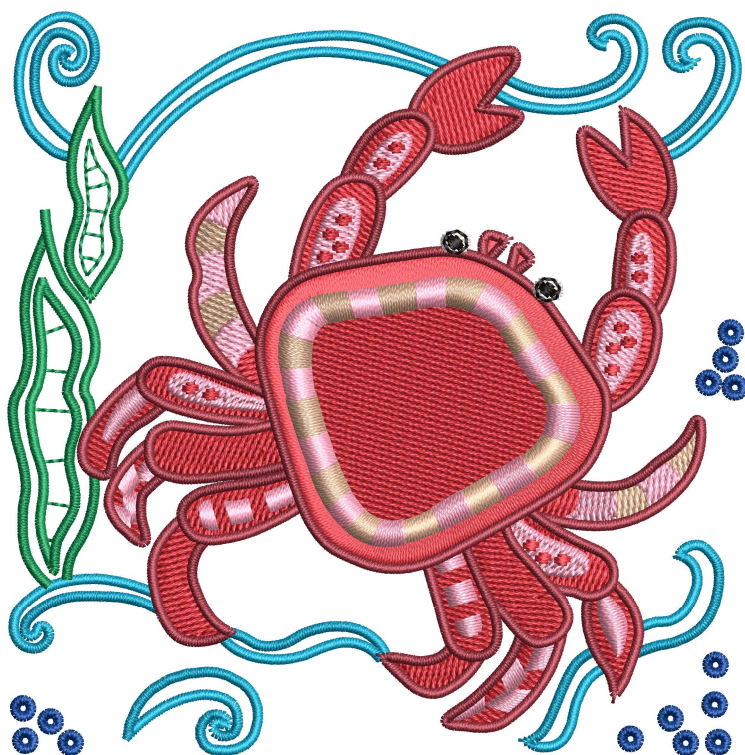
#	Color	Element	Code	Name	Chart
1.	4		H-066-1259	Turquoise	Hemingworth
2.	6		H-105-1108	Dark Kelly Green	Hemingworth
3.	2		H-198-1030	Candy Apple	Hemingworth
4.	7		H-165-1235	Cream Soda	Hemingworth
5.	1		H-247-1008	Sweet Pea	Hemingworth
6.	3		H-201-1031	Rummy Raisin	Hemingworth
7.	2		H-198-1030	Candy Apple	Hemingworth
8.	9		H-001-1001	Pure White	Hemingworth
9.	8		H-024-1000	Classic Black	Hemingworth
10.	5		H-047-1204	Brilliant Blue	Hemingworth

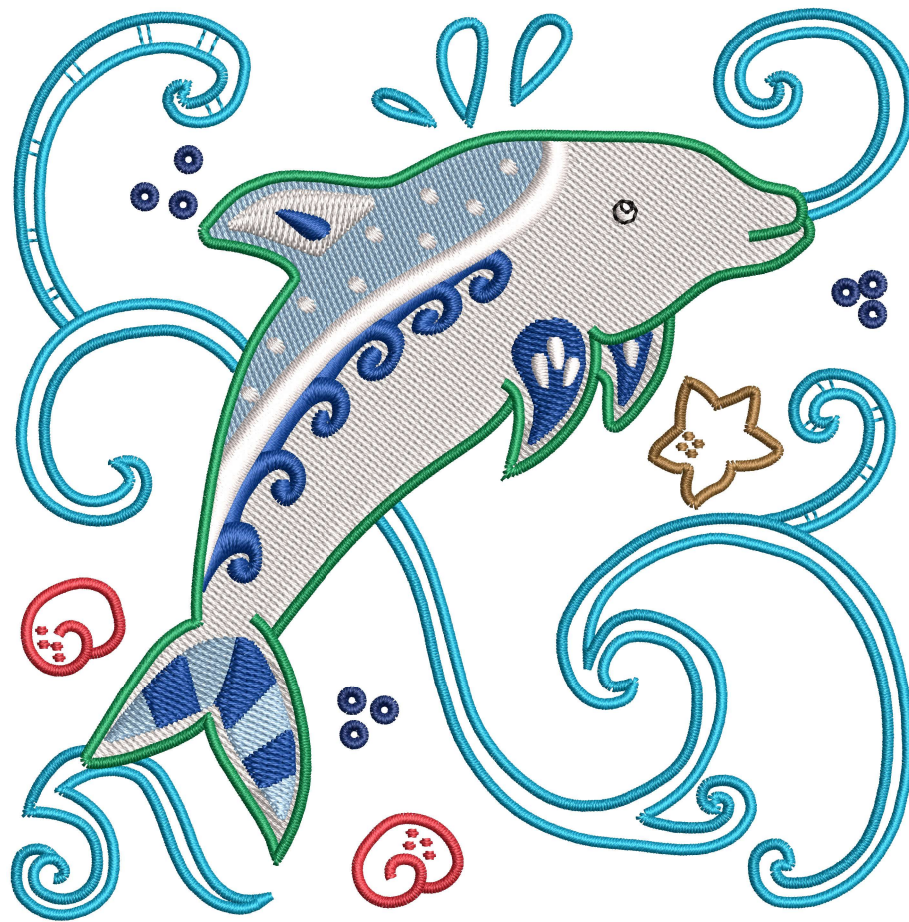
Design:SLB-CrabSM.PES

Height: 98.5 mm
 Width: 97.8 mm
 Stitches: 23,080
 Colors: 9
 Color changes: 9
 Trims: 67
 Machine format: Janome
 Hoop: Medium (130 x 180)
 Fabric type: Custom Fabric
 Required stabilizer: Topping:
 Backing: Tear Away x 2
 Total bobbin: 35.24m

Color Sequence:

#	Color	Element	Code	Name	Chart
1.	4		H-066-1259	Turquoise	Hemingworth
2.	6		H-105-1108	Dark Kelly Green	Hemingworth
3.	2		H-198-1030	Candy Apple	Hemingworth
4.	7		H-165-1235	Cream Soda	Hemingworth
5.	1		H-247-1008	Sweet Pea	Hemingworth
6.	3		H-201-1031	Rummy Raisin	Hemingworth
7.	2		H-198-1030	Candy Apple	Hemingworth
8.	9		H-001-1001	Pure White	Hemingworth
9.	8		H-024-1000	Classic Black	Hemingworth
10.	5		H-047-1204	Brilliant Blue	Hemingworth





Design:SLB-Dolphin.EMB

Height: 120.8 mm
 Width: 119.5 mm
 Stitches: 23,210
 Colors: 10
 Color changes: 11
 Trims: 42
 Machine format: Janome
 Hoop: Medium (130 x 180)
 Fabric type: Custom Fabric
 Required stabilizer: Topping:
 Backing: Tear Away x 2
 Total bobbin: 36.73m

Color Sequence:

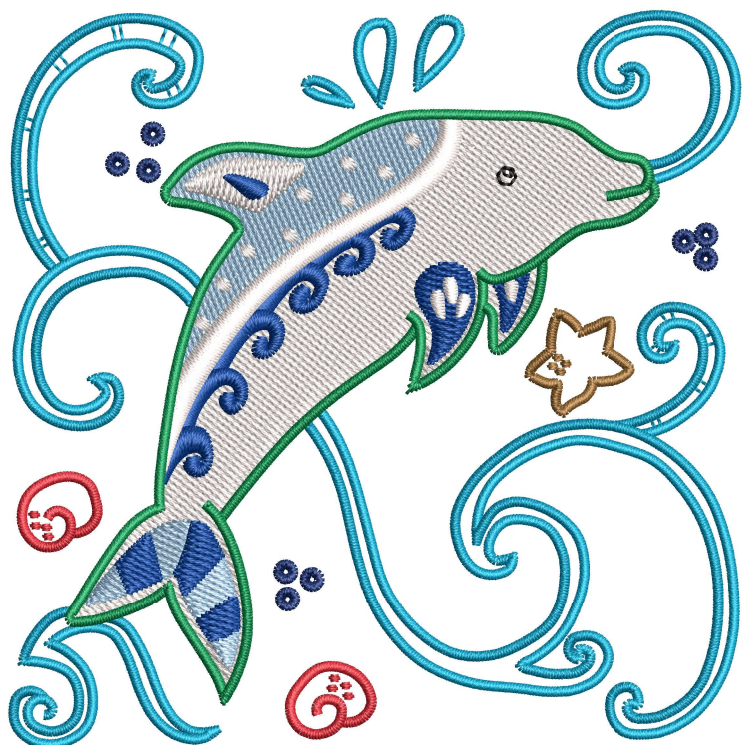
#	Color	Element	Code Name	Chart
1.	3		H-066-1259 Turquoise	Hemingworth
2.	8		H-253-1148 Snowflake	Hemingworth
3.	2		H-049-1189 Winter Blue	Hemingworth
4.	8		H-253-1148 Snowflake	Hemingworth
5.	4		H-047-1204 Brilliant Blue	Hemingworth
6.	10		H-001-1001 Pure White	Hemingworth
7.	6		H-105-1108 Dark Kelly Green	Hemingworth
8.	10		H-001-1001 Pure White	Hemingworth
9.	9		H-024-1000 Classic Black	Hemingworth
10.	5		H-048-1205 Deep Blue	Hemingworth
11.	7		H-156-1142 Toasted Almond	Hemingworth
12.	1		H-198-1030 Candy Apple	Hemingworth

Design:SLB-DolphinSM.PES

Height: 97.8 mm
 Width: 96.7 mm
 Stitches: 17,979
 Colors: 10
 Color changes: 11
 Trims: 40
 Machine format: Janome
 Hoop: Medium (130 x 180)
 Fabric type: Custom Fabric
 Required stabilizer: Topping:
 Backing: Tear Away x 2
 Total bobbin: 25.71m

Color Sequence:

#	Color	Element	Code	Name	Chart
1.	3		H-066-1259	Turquoise	Hemingworth
2.	8		H-253-1148	Snowflake	Hemingworth
3.	2		H-049-1189	Winter Blue	Hemingworth
4.	8		H-253-1148	Snowflake	Hemingworth
5.	4		H-047-1204	Brilliant Blue	Hemingworth
6.	10		H-001-1001	Pure White	Hemingworth
7.	6		H-105-1108	Dark Kelly Green	Hemingworth
8.	10		H-001-1001	Pure White	Hemingworth
9.	9		H-024-1000	Classic Black	Hemingworth
10.	5		H-048-1205	Deep Blue	Hemingworth
11.	7		H-156-1142	Toasted Almond	Hemingworth
12.	1		H-198-1030	Candy Apple	Hemingworth





Design:SLB-Fish.PES

Height: 119.5 mm
 Width: 121.6 mm
 Stitches: 25,027
 Colors: 10
 Color changes: 13
 Trims: 83
 Machine format: Janome
 Hoop: Medium (130 x 180)
 Fabric type: Custom Fabric
 Required stabilizer: Topping:
 Backing: Tear Away x 2
 Total bobbin: 36.71m

Color Sequence:

#	Color	Element	Code	Name	Chart
1.	3		H-066-1259	Turquoise	Hemingworth
2.	6		H-105-1108	Dark Kelly Green	Hemingworth
3.	5		H-048-1205	Deep Blue	Hemingworth
4.	7		H-194-1025	Orange Slice	Hemingworth
5.	1		H-198-1030	Candy Apple	Hemingworth
6.	3		H-066-1259	Turquoise	Hemingworth
7.	7		H-194-1025	Orange Slice	Hemingworth
8.	3		H-066-1259	Turquoise	Hemingworth
9.	4		H-047-1204	Brilliant Blue	Hemingworth
10.	2		H-201-1031	Rummy Raisin	Hemingworth
11.	7		H-194-1025	Orange Slice	Hemingworth
12.	8		H-156-1142	Toasted Almond	Hemingworth
13.	10		H-001-1001	Pure White	Hemingworth
14.	9		H-024-1000	Classic Black	Hemingworth

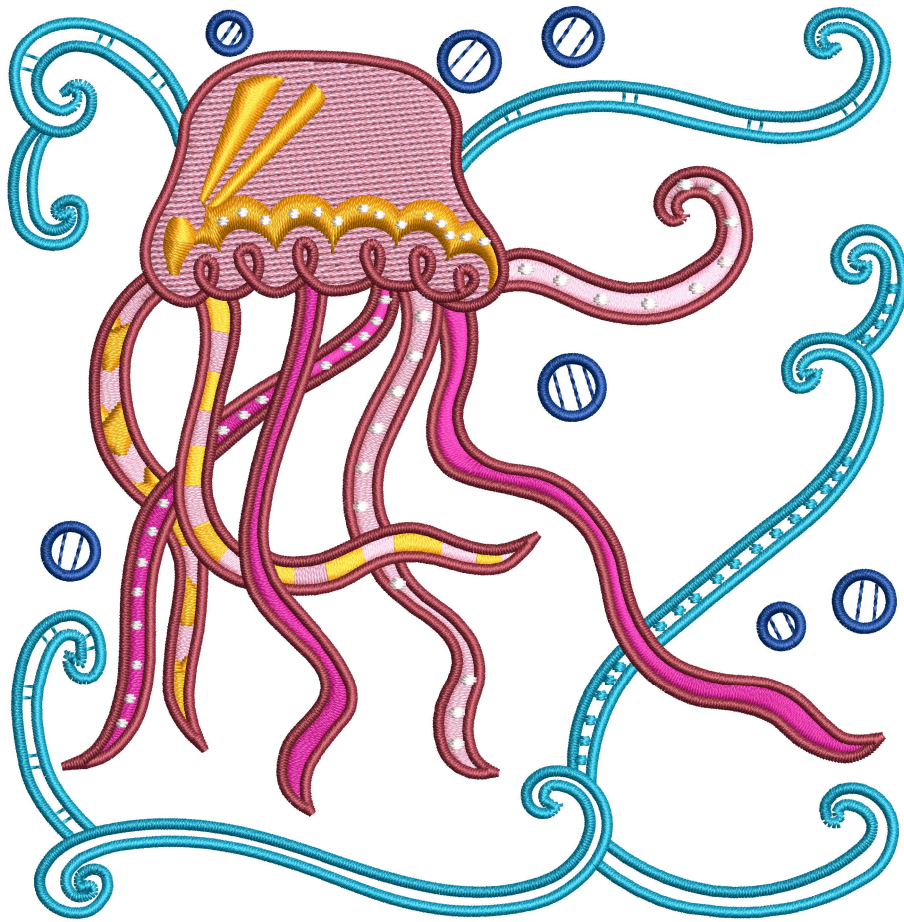
Design:SLB-FishSM.PES

Height: 96.1 mm
 Width: 97.8 mm
 Stitches: 19,748
 Colors: 10
 Color changes: 13
 Trims: 75
 Machine format: Janome
 Hoop: Medium (130 x 180)
 Fabric type: Custom Fabric
 Required stabilizer: Topping:
 Backing: Tear Away x 2
 Total bobbin: 26.28m

Color Sequence:

#	Color	Element	Code	Name	Chart
1.	3		H-066-1259	Turquoise	Hemingworth
2.	6		H-105-1108	Dark Kelly Green	Hemingworth
3.	5		H-048-1205	Deep Blue	Hemingworth
4.	7		H-194-1025	Orange Slice	Hemingworth
5.	1		H-198-1030	Candy Apple	Hemingworth
6.	3		H-066-1259	Turquoise	Hemingworth
7.	7		H-194-1025	Orange Slice	Hemingworth
8.	3		H-066-1259	Turquoise	Hemingworth
9.	4		H-047-1204	Brilliant Blue	Hemingworth
10.	2		H-201-1031	Rummy Raisin	Hemingworth
11.	7		H-194-1025	Orange Slice	Hemingworth
12.	8		H-156-1142	Toasted Almond	Hemingworth
13.	10		H-001-1001	Pure White	Hemingworth
14.	9		H-024-1000	Classic Black	Hemingworth





Design:SLB-Jellyfish.PES

Height: 120.8 mm
 Width: 119.0 mm
 Stitches: 24,029
 Colors: 7
 Color changes: 6
 Trims: 79
 Machine format: Janome
 Hoop: Medium (130 x 180)
 Fabric type: Custom Fabric
 Required stabilizer: Topping:
 Backing: Tear Away x 2
 Total bobbin: 37.31m

Color Sequence:

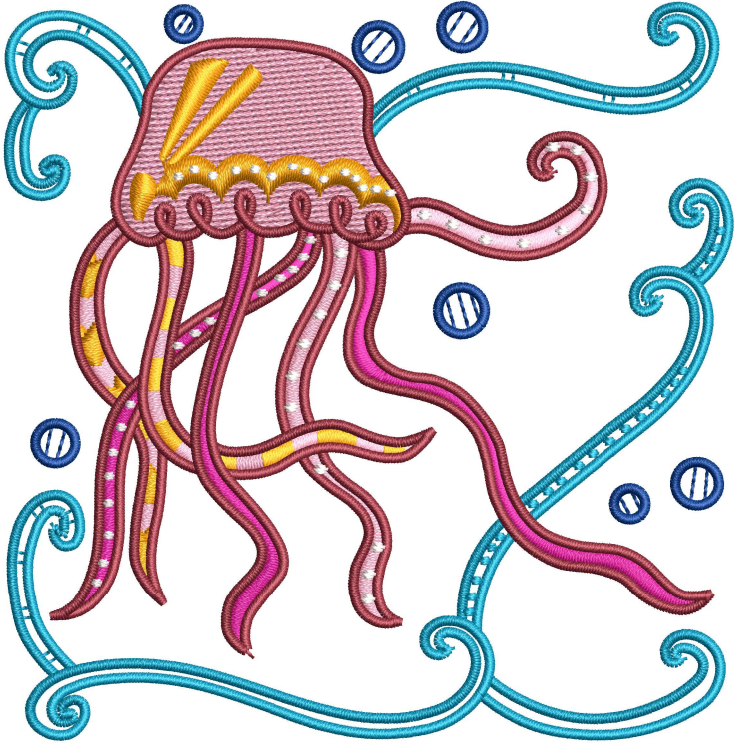
#	Color	Element	Code	Name	Chart
1.	4		H-066-1259	Turquoise	Hemingworth
2.	2		H-251-1034	Primrose	Hemingworth
3.	1		H-247-1008	Sweet Pea	Hemingworth
4.	6		H-187-1232	Orange Meringue	Hemingworth
5.	3		H-201-1031	Rummy Raisin	Hemingworth
6.	7		H-001-1001	Pure White	Hemingworth
7.	5		H-047-1204	Brilliant Blue	Hemingworth

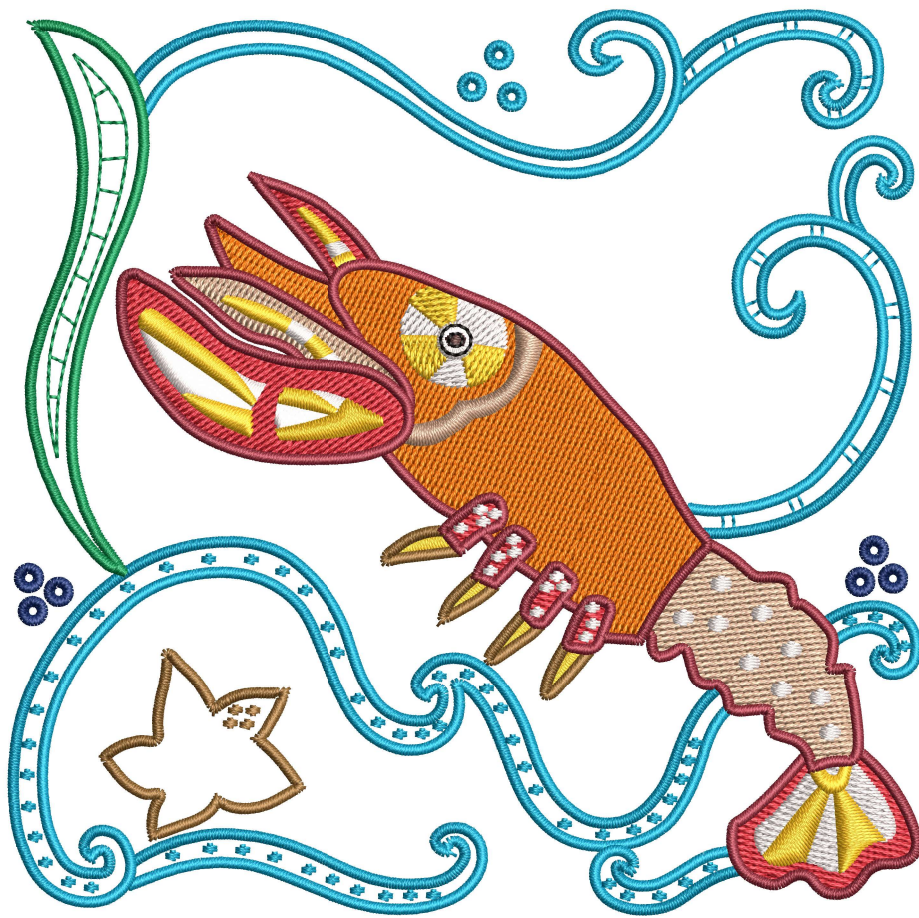
Design:SLB-JellyfishSM.PES

Height: 97.8 mm
 Width: 96.3 mm
 Stitches: 19,196
 Colors: 7
 Color changes: 6
 Trims: 74
 Machine format: Janome
 Hoop: Medium (130 x 180)
 Fabric type: Custom Fabric
 Required stabilizer: Topping:
 Backing: Tear Away x 2
 Total bobbin: 26.64m

Color Sequence:

#	Color	Element	Code Name	Chart
1.	4		H-066-1259 Turquoise	Hemingworth
2.	2		H-251-1034 Primrose	Hemingworth
3.	1		H-247-1008 Sweet Pea	Hemingworth
4.	6		H-187-1232 Orange Meringue	Hemingworth
5.	3		H-201-1031 Rummy Raisin	Hemingworth
6.	7		H-001-1001 Pure White	Hemingworth
7.	5		H-047-1204 Brilliant Blue	Hemingworth





Design:SLB-Lobster.PES

Height: 119.9 mm
 Width: 120.8 mm
 Stitches: 25,188
 Colors: 12
 Color changes: 13
 Trims: 113
 Machine format: Janome
 Hoop: Medium (130 x 180)
 Fabric type: Custom Fabric
 Required stabilizer: Topping:
 Backing: Tear Away x 2
 Total bobbin: 36.39m

Color Sequence:

#	Color	Element	Code	Name	Chart
1.	9		H-156-1142	Toasted Almond	Hemingworth
2.	3		H-066-1259	Turquoise	Hemingworth
3.	7		H-194-1025	Orange Slice	Hemingworth
4.	1		H-198-1030	Candy Apple	Hemingworth
5.	8		H-165-1235	Cream Soda	Hemingworth
6.	12		H-001-1001	Pure White	Hemingworth
7.	6		H-005-1274	Mango	Hemingworth
8.	9		H-156-1142	Toasted Almond	Hemingworth
9.	2		H-201-1031	Rummy Raisin	Hemingworth
10.	12		H-001-1001	Pure White	Hemingworth
11.	10		H-136-1128	Deep Walnut	Hemingworth
12.	11		H-024-1000	Classic Black	Hemingworth
13.	5		H-105-1108	Dark Kelly Green	Hemingworth
14.	4		H-048-1205	Deep Blue	Hemingworth

Design:SLB-LobsterSM.PES

Height: 97.1 mm
 Width: 97.8 mm
 Stitches: 19,539
 Colors: 12
 Color changes: 13
 Trims: 111
 Machine format: Janome
 Hoop: Medium (130 x 180)
 Fabric type: Custom Fabric
 Required stabilizer: Topping:
 Backing: Tear Away x 2
 Total bobbin: 25.52m

Color Sequence:

#	Color	Element	Code	Name	Chart
1.	9		H-156-1142	Toasted Almond	Hemingworth
2.	3		H-066-1259	Turquoise	Hemingworth
3.	7		H-194-1025	Orange Slice	Hemingworth
4.	1		H-198-1030	Candy Apple	Hemingworth
5.	8		H-165-1235	Cream Soda	Hemingworth
6.	12		H-001-1001	Pure White	Hemingworth
7.	6		H-005-1274	Mango	Hemingworth
8.	9		H-156-1142	Toasted Almond	Hemingworth
9.	2		H-201-1031	Rummy Raisin	Hemingworth
10.	12		H-001-1001	Pure White	Hemingworth
11.	10		H-136-1128	Deep Walnut	Hemingworth
12.	11		H-024-1000	Classic Black	Hemingworth
13.	5		H-105-1108	Dark Kelly Green	Hemingworth
14.	4		H-048-1205	Deep Blue	Hemingworth

