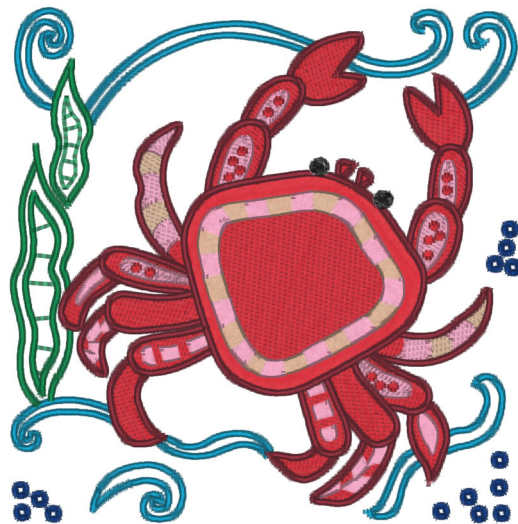
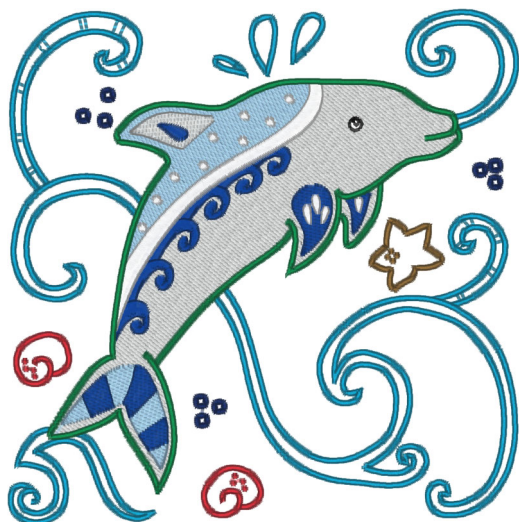


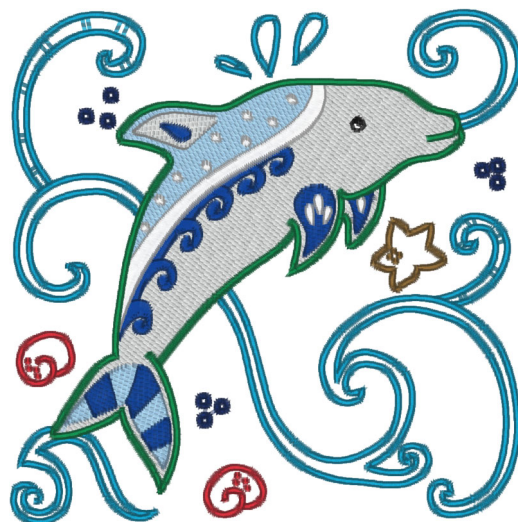
Slb-Crab.pes
4.72x4.76 inches; 28,996 stitches
10 thread changes; 9 colors



Slb-Crabsm.pes
3.85x3.88 inches; 22,818 stitches
10 thread changes; 9 colors



Slb-Dolphin.pes
4.70x4.76 inches; 23,009 stitches
12 thread changes; 10 colors



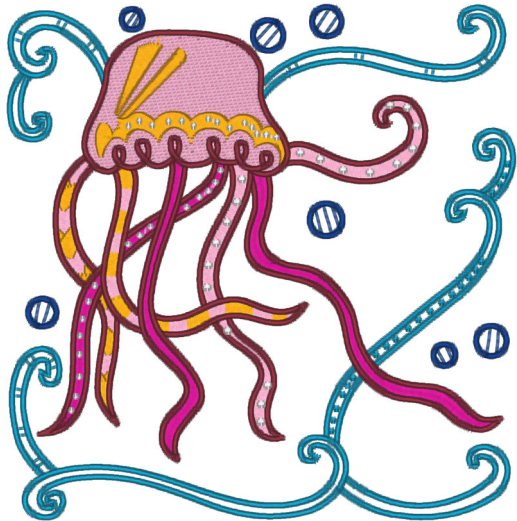
Slb-Dolphinm.pes
3.81x3.85 inches; 17,808 stitches
12 thread changes; 10 colors



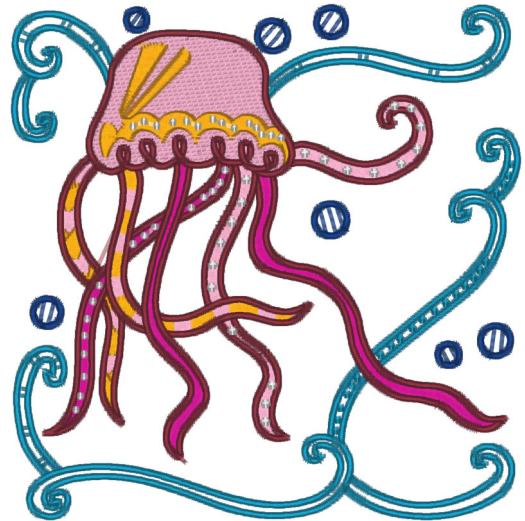
Slb-Fish.pes
4.79x4.71 inches; 24,710 stitches
14 thread changes; 10 colors



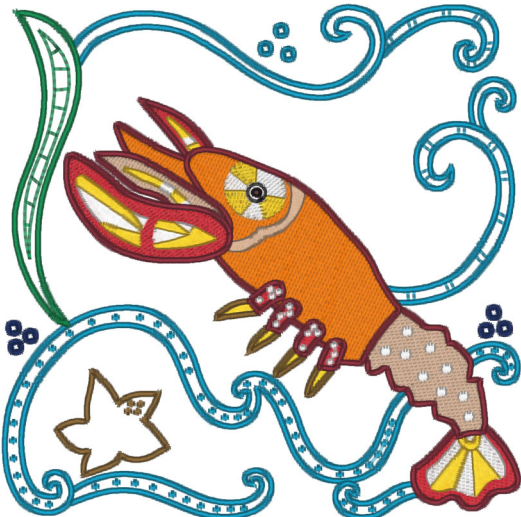
Slb-Fishm.pes
3.85x3.79 inches; 19,476 stitches
14 thread changes; 10 colors



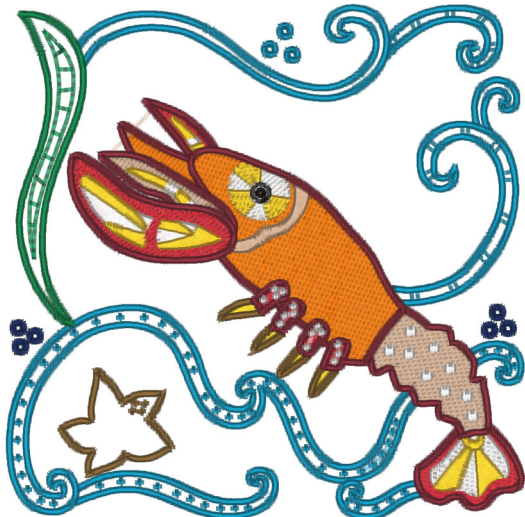
Slb-Jellyfish.pes
4.69x4.76 inches; 23,718 stitches
7 thread changes; 7 colors



Slb-Jellyfishsm.pes
3.80x3.85 inches; 18,923 stitches
7 thread changes; 7 colors



Slb-Lobster.pes
4.76x4.72 inches; 24,784 stitches
14 thread changes; 12 colors



Slb-Lobstersm.pes
3.85x3.83 inches; 19,162 stitches
14 thread changes; 12 colors